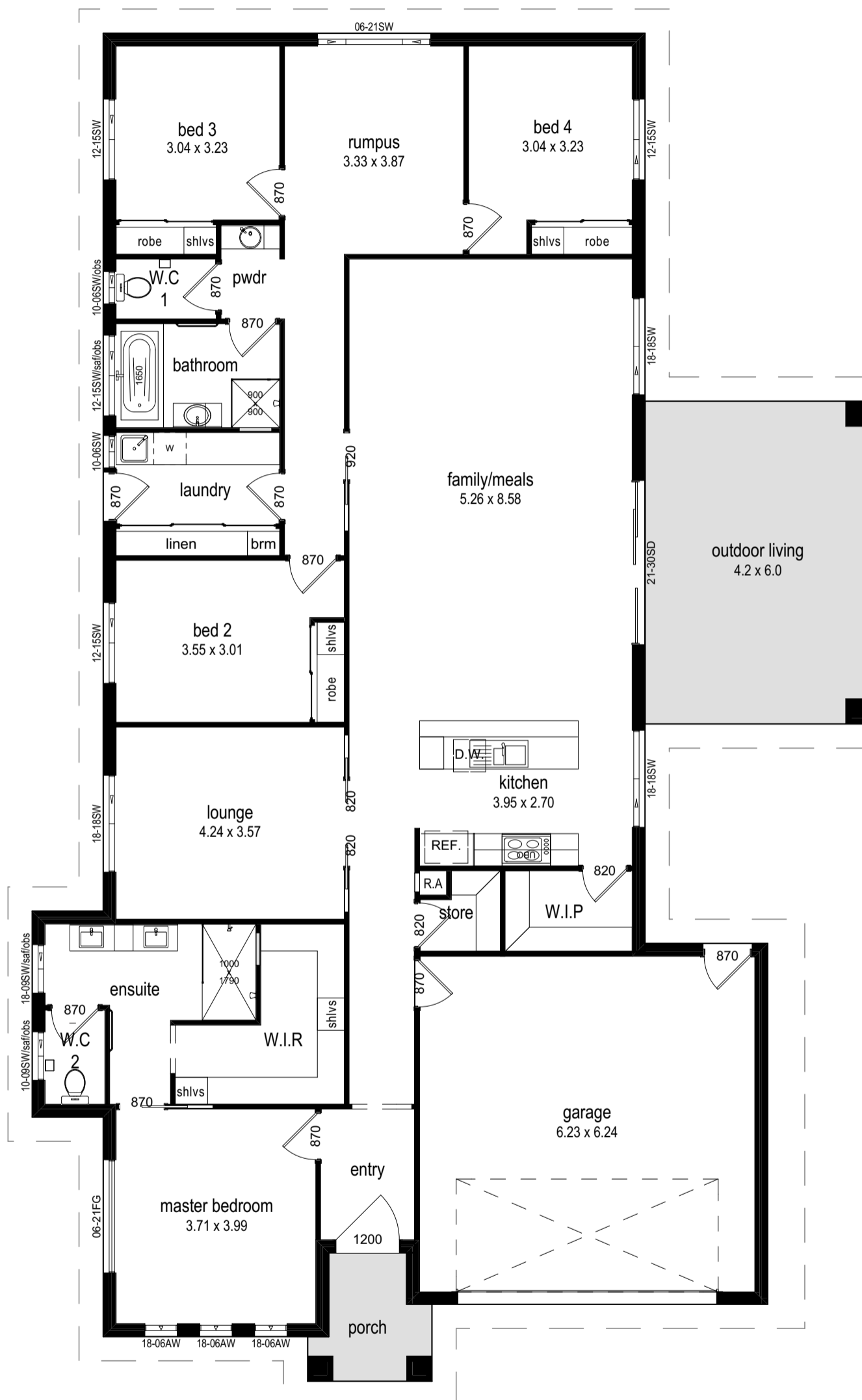








Goulburn 31



-  4
-  2
-  3
-  2

289.02M2 – 31.11SQR

Living	215.91m ²	(23.24 ^{SQR})
Garage	43.45m ²	(4.68 ^{SQR})
Width	15.39m	

Outdoor Living	25.20m ²	(2.71 ^{SQR})
Portico	4.46m ²	(0.48 ^{SQR})
Length	25.67m	